

# Storage Boxes

Continued

## Economy Bins

Affordable polypropylene shelf bins are an economical way to store hardware or parts. These heavy-duty bins come in a variety of sizes and colors. Bins are waterproof and impervious to most chemicals, grease, and oil. Bins are available in the following colors: yellow, blue, red, or ivory. Please specify color when placing your order.



Economy Bins

Supplier Number	Outside Dimensions L x W x H	Weight (lb.) Carton	Carton Quantity	Dividers Product No.	Number of Bin Cups per Bin HQBC-11	Number of Bin Cups per Bin HQBX112	Price Each	Price Per Carton
HQSB-100	117 <sup>7</sup> / <sub>8</sub> x 23 <sup>3</sup> / <sub>4</sub> x 4 in.	8	36	—	3	0		
HQSB-101	117 <sup>7</sup> / <sub>8</sub> x 4 <sup>1</sup> / <sub>8</sub> x 4 in.	15	36	HDSB-101	6	2		
HQSB-102	117 <sup>7</sup> / <sub>8</sub> x 6 <sup>5</sup> / <sub>8</sub> x 4 in.	16	30	HDSB-102	9	4		
HQSB-103	177 <sup>7</sup> / <sub>8</sub> x 4 <sup>1</sup> / <sub>8</sub> x 4 in.	15	20	HDSB-105	13	4		
HQSB-104	177 <sup>7</sup> / <sub>8</sub> x 6 <sup>5</sup> / <sub>8</sub> x 4 in.	18	20	HDSB-106	21	8		
HQSB-105	237 <sup>7</sup> / <sub>8</sub> x 4 <sup>1</sup> / <sub>8</sub> x 4 in.	15	16	HDSB-109	18	6		
HQSB-106	237 <sup>7</sup> / <sub>8</sub> x 6 <sup>5</sup> / <sub>8</sub> x 4 in.	12	8	HDSB-110	29	9		
HQSB-107	117 <sup>7</sup> / <sub>8</sub> x 8 <sup>1</sup> / <sub>4</sub> x 4 in.	14	20	HDSB-103	9	3		
HQSB-108	177 <sup>7</sup> / <sub>8</sub> x 8 <sup>1</sup> / <sub>8</sub> x 4 in.	12	10	HDSB-107	12	4		
HQSB-109	117 <sup>7</sup> / <sub>8</sub> x 11 <sup>1</sup> / <sub>8</sub> x 4 in.	8	8	HDSB-104	15	6		
HQSB-110	177 <sup>7</sup> / <sub>8</sub> x 11 <sup>1</sup> / <sub>8</sub> x 4 in.	11	8	HDSB-108	19	6		
HQSB-114	237 <sup>7</sup> / <sub>8</sub> x 8 <sup>1</sup> / <sub>8</sub> x 4 in.	9	6	HDSB-114	24	8		
HQSB-116	237 <sup>7</sup> / <sub>8</sub> x 11 <sup>1</sup> / <sub>8</sub> x 4 in.	12	6	HDSB-116	35	16		

Order direct from supplier:  
 Rogan Incorporated  
 400 Devils Glen Road / P.O. Box 908  
 Bettendorf, Iowa 52722  
 Phone: 800-798-6007 / Fax: 563-355-8333  
 Email: [sales@roganinc.com](mailto:sales@roganinc.com)  
 Freight: F.O.B. Shipping Point

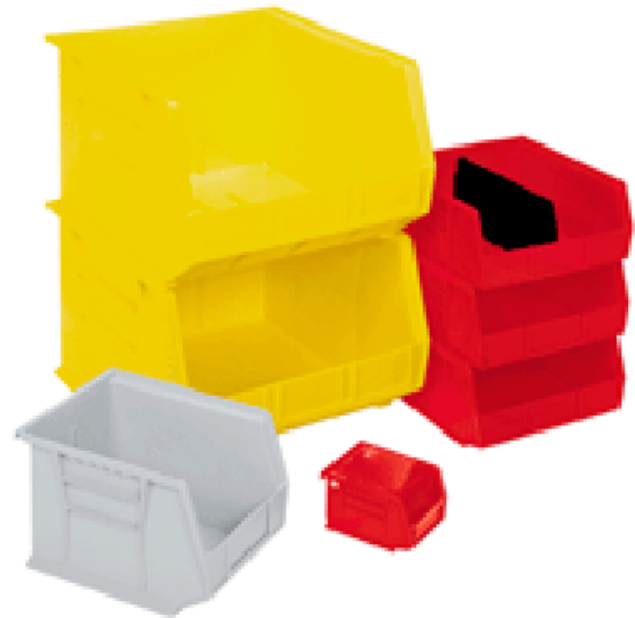
Prices subject to change without notice.

# Storage Boxes

Continued

## Heavy-Duty Bins

Heavy-duty bins are rugged enough to hang securely on louvered panels and have an extra-wide stacking ledge that ensures security. There is a large label slot for easy identification. Reinforcing ribs prevent bins from spreading when loaded. Finger grips allow for easy handling. Bins are available in the following colors: red, yellow, blue, or stone. Please specify color when placing your order.



Heavy-Duty Bins

Product Number	Inside Dimensions L x W x H	Weight. (lb.) Carton	Outside Dimensions L x W x H	X*	Carton Quantity	Price Each	Price Per Carton
H30-210	4 <sup>3</sup> / <sub>4</sub> x 37 <sup>1</sup> / <sub>16</sub> x 2 <sup>3</sup> / <sub>16</sub> in.	5	5 <sup>3</sup> / <sub>8</sub> x 41 <sup>1</sup> / <sub>8</sub> x 3 in.	4 in.	24		
H30-220	6 <sup>3</sup> / <sub>4</sub> x 37 <sup>1</sup> / <sub>16</sub> x 21 <sup>3</sup> / <sub>16</sub> in.	8	7 <sup>3</sup> / <sub>8</sub> x 41 <sup>1</sup> / <sub>8</sub> x 3 in.	6 in.	24		
H30-224	10 <sup>1</sup> / <sub>4</sub> x 33 <sup>1</sup> / <sub>16</sub> x 3 <sup>3</sup> / <sub>4</sub> in.	7	10 <sup>7</sup> / <sub>8</sub> x 43 <sup>1</sup> / <sub>16</sub> x 4 in.	9 in.	12		
H30-230	10 <sup>1</sup> / <sub>4</sub> x 43 <sup>3</sup> / <sub>8</sub> x 4 <sup>3</sup> / <sub>4</sub> in.	10	10 <sup>7</sup> / <sub>8</sub> x 51 <sup>1</sup> / <sub>2</sub> x 5 in.	9 in.	12		
H30-234	14 <sup>1</sup> / <sub>16</sub> x 43 <sup>3</sup> / <sub>8</sub> x 4 <sup>3</sup> / <sub>4</sub> in.	13	14 <sup>3</sup> / <sub>4</sub> x 51 <sup>1</sup> / <sub>2</sub> x 5 in.	12 <sup>3</sup> / <sub>16</sub> in.	12		
H30-235	10 <sup>1</sup> / <sub>4</sub> x 10 x 4 <sup>3</sup> / <sub>4</sub> in.	10	10 <sup>7</sup> / <sub>8</sub> x 11 x 5 in.	9 in.	6		
H30-239	10 x 6 <sup>9</sup> / <sub>16</sub> x 6 <sup>3</sup> / <sub>4</sub> in.	10	10 <sup>3</sup> / <sub>4</sub> x 8 <sup>1</sup> / <sub>4</sub> x 7 in.	8 in.	6		
H30-240	14 x 6 <sup>9</sup> / <sub>16</sub> x 6 <sup>3</sup> / <sub>4</sub> in.	24	14 <sup>3</sup> / <sub>4</sub> x 8 <sup>1</sup> / <sub>4</sub> x 7 in.	12 in.	12		
H30-250	14 x 14 <sup>3</sup> / <sub>4</sub> x 6 <sup>3</sup> / <sub>4</sub> in.	21	14 <sup>3</sup> / <sub>4</sub> x 16 <sup>1</sup> / <sub>2</sub> x 7 in.	12 in.	6		
H30-255	9 <sup>3</sup> / <sub>4</sub> x 15 x 4 <sup>3</sup> / <sub>4</sub> in.	12	10 <sup>3</sup> / <sub>4</sub> x 16 <sup>1</sup> / <sub>2</sub> x 5 in.	8 <sup>1</sup> / <sub>2</sub> in.	6		
H30-265	17 <sup>1</sup> / <sub>8</sub> x 6 <sup>1</sup> / <sub>2</sub> x 8 <sup>3</sup> / <sub>4</sub> in.	17	18 x 8 <sup>1</sup> / <sub>8</sub> x 9 in.	14 <sup>1</sup> / <sub>2</sub> in.	6		
H30-270	17 <sup>1</sup> / <sub>8</sub> x 14 <sup>7</sup> / <sub>8</sub> x 10 <sup>3</sup> / <sub>4</sub> in.	13	18 x 16 <sup>1</sup> / <sub>2</sub> x 11 in.	13 <sup>3</sup> / <sub>4</sub> in.	3		

\*X is inside-bottom dimension.

Order direct from supplier:  
 Rogan Incorporated  
 400 Devils Glen Road / P.O. Box 908  
 Bettendorf, Iowa 52722  
 Phone: 800-798-6007 / Fax: 563-355-8333  
 Email: [sales@roganinc.com](mailto:sales@roganinc.com)  
 Freight: F.O.B. Shipping Point

Prices subject to change without notice.

# Hardware Accessories

Merchandising Aids

## Electronic Scale S-2000 JR

This accurate, affordable, and portable scale is the ultimate choice for simple price-computing applications. It provides a one-button operation and displays weight to 1/100th of a pound.

### Electronic Scale Features Include

- Two displays — one in front for the customer and one in back for the operator.
- Large 12 x 8½-inch platter for easy and efficient weighing.
- Accumulator for totaling the day's receipts.
- NTEP certified for pound and kilogram use.
- Rechargeable battery version.
- 15-, 30-, or 60-pound capacity.
- Stainless steel.



The S-2000 JR is available to help you sell hardware by the pound.

Supplier Part Number	Description	Package Quantity	Price Each
S-2000 JR	Electronic scale with stainless steel platter	1	

Order direct from supplier:  
Rogan Incorporated  
400 Devils Glen Road / P.O. Box 908  
Bettendorf, Iowa 52722  
Phone: 800-798-6007 / Fax: 563-355-8333  
Email: [sales@roganinc.com](mailto:sales@roganinc.com)  
Freight: F.O.B. Shipping Point

Prices subject to change without notice.

# Hardware Accessories

Continued

## Hardware Scales

- Battery operation with auto power-off feature.
- AC adapter included.
- Large 1-inch (25 mm) display.
- Switch between units (lb., oz., kg, and g).
- Soft-touch tack switch.
- Stainless steel platter.
- Compact, easy-to-use design.
- Zero, net, stable, and low-battery indicators.



SW-50

Order direct from supplier:  
Rogan Incorporated  
400 Devils Glen Road / P.O. Box 908  
Bettendorf, Iowa 52722  
Phone: 800-798-6007 / Fax: 563-355-8333  
Email: [sales@roganinc.com](mailto:sales@roganinc.com)  
Freight: F.O.B. Shipping Point

Prices subject to change without notice.

# Pallet Jacks

Merchandising Aids



## Deluxe Pallet Jack HPM5-2048

This jack provides an economical way to move heavy pallet loads without the use of a fork truck. The jack features two articulating steering wheels and two front load rollers.

Steering wheels have precision bearing and dust covers for added life. Nose wheels are located on the front edge of each fork to assist in clean pallet entrance and exit. Two-entry wheels facilitate easy entry, and two rollers make disengagement much smoother.

### Other features include:

- Reinforced triple-formed forks.
- Internally mounted solid steel adjustable push rods.
- Spring-loaded loop handle automatically returns to vertical position when not in use.
- Hydraulic pump design facilitates easy-access seal replacement.
- Chrome-plated hydraulic pump piston provides long seal life.
- 5,550-pound capacity for standard jack.
- Red powder-coat finish.



## E-Z Pallet Lift HEZ27x48EZP

A rugged, dependable, and affordable 215-degree pivot-action pallet lift.

### This pallet features:

- 5,500-pound capacity.
- Spring-A-Matic handle self-returns.
- Safety-designed loop handle includes neutral position and fingertip release.
- Three-position hand-lowering control.
- One-piece formed-steel “C” channel tapered, reinforced forks.
- Leakproof pump.
- Hard chrome-plated ram and piston.
- Tapered fork end.
- Nylon wheels provide quiet, smooth use.

Note: Other types and sizes are available. Call Rogan for more information.

Supplier Number	Description	Weight	Package Quantity	Price Each
HPM5-2048	20-in. W x 48-in. L, 27/8-in. lowered height	281	1	
HEZ27-48EZPP	27-in. x 48-in. fork size	210	1	

Order direct from supplier:  
Rogan Incorporated  
400 Devils Glen Road / P.O. Box 908  
Bettendorf, Iowa 52722

Phone: 800-798-6007 / Fax: 563-355-8333  
Email: [sales@roganinc.com](mailto:sales@roganinc.com)  
Freight: F.O.B. Shipping Point

Prices subject to change without notice.